

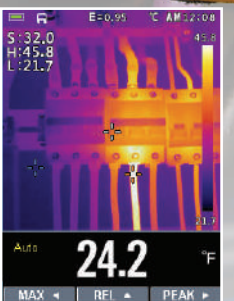
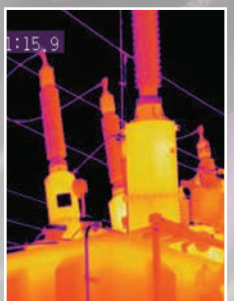
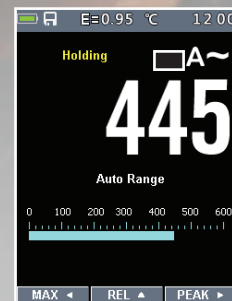
Professional AC/DC True RMS Clamp Meters with 80x80 InfraRed Thermal Imager



EMC & LVD
EN: 61326
EN: 61010-1
EN: 61010-02-032
EN: 61010-02-033



Model DT-320BS
Flexible clamp (optional)



- Fast response time
- True RMS
- TFT color LCD display
- 6000 counts

Features

Built-in Thermal Imager with 80x80 InfraRed resolution quickly and safely identifies hot spots without contact
2.4" TFT color 6000 counts LCD display with 240x320 pixels for easy and clear viewing of images and readings
True RMS measurement for ACV / ACA / LoZ for ACV measurement
Low pass filter for accurate measurement of variable frequency drive (VFD) signals
1.4" (37mm) Jaw opening
Flexible current probe (320B/320BS optional) expands the measurement range to 3000 ACA
AC, AC+DC True RMS measurement & 1KHz ACV, ACA bandwidth
A/D convert fast sampling time: 10 times/sec
Peak capture as fast as 500µs & Inrush current
Min/Max/Avg with Time stamp (records signal fluctuations)
With Bluetooth connect to Thermview+ smart phone App for documentation reporting and sharing
Logging function with Trend capture for easy review of logged data
Double molded plastic housing for safe testing and flashlight for dark location

Specifications

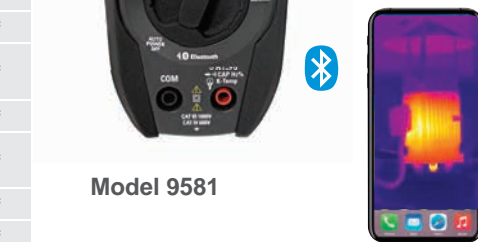
	9481	9581			
Thermal Imager					
IR resolution	80x80 pixels	*			
Field of View (FOV)	21° x 21°	*			
Thermal sensitivity/NETD	< 0.08°C /80mK	*			
Image frequency	50Hz	*			
Object temperature range	-20 to 260°C (-4 to 500°F)	*			
Spectral range	8-14 µm	*			
Color palettes	Iron/Rainbow/Grey/Grey Inverted/Feather	*			
Accuracy	±2°C (±3.6°F) or ±2% of reading	*			
True RMS Multimeter Functions					
Function	Maximum	Max. resolution	Best Accuracy		
Voltage DC	1000V	100mV	±(0.5% + 5d)	1500V	*
Voltage AC	1000V	100mV	±(1.2% + 5d)	1500V	*
Current DC	1000A	0.01A	±(2% + 8d)	*	*
Current AC	1000A	0.01A	±(2.5% + 5d)	*	*
Flexible A	3000A	0.01A	±(3.0%+5d)	*	*
Resistance	60MΩ	0.1Ω	±(0.8% + 5d)	*	*
Capacitance	100mF	0.01nF	±(3.0% + 5d)	*	*
Frequency	10MHz	0.01Hz	±(0.2% + 5d)	*	*
Inrush Current	1000A	1A		*	*
Temperature	1000°C/1832°F		±(1.5%+3°C)	*	*
Diode & Continuity	Yes			*	*
Interface	Bluetooth			*	*
Power Supply	Li-ion rechargeable battery			*	*

Size(HxWxD): 95mm x 270mm x 42mm Weight: 550g

Accessories: Test leads, gift box with carrying case, Temperature probe Li-ion rechargeable battery, AC Charger



Model 9481



Model 9581

