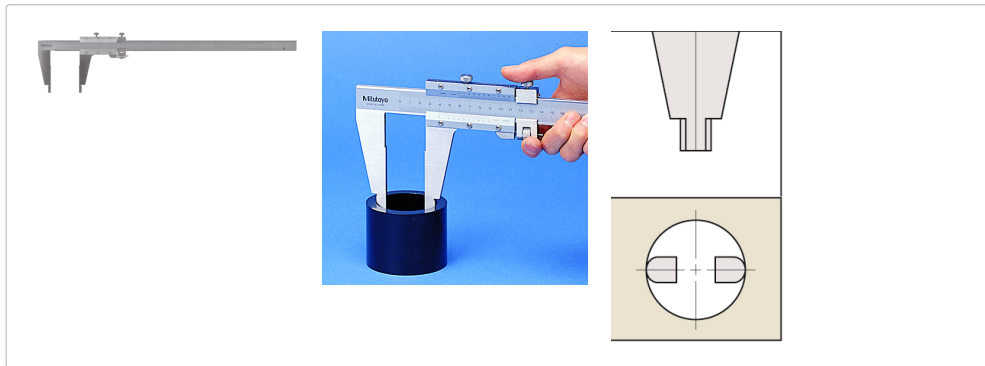




Vernier calipers, general shape

Article number: 160-119



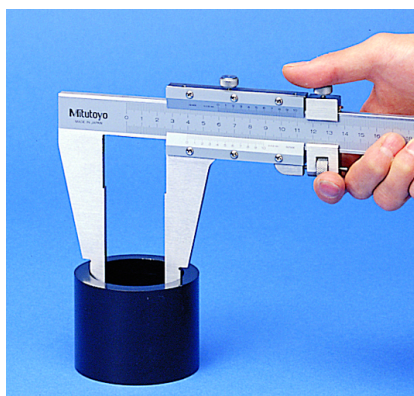
Pictures



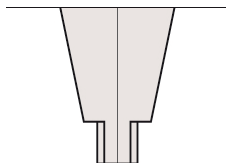
a: **125mm** _
 b: **100mm** _
 c: **18mm** _
 d: **25mm** _
 e: **14.8mm** _
 f: **6mm** _
 r: **10mm** _



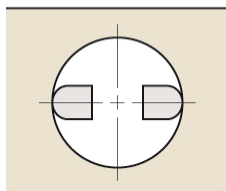
a: **125mm** _
 b: **100mm** _
 c: **18mm** _
 d: **25mm** _
 e: **14.8mm** _
 f: **6mm** _
 r: **10mm** _



a: **125mm** _
 b: **100mm** _
 c: **18mm** _
 d: **25mm** _
 e: **14.8mm** _
 f: **6mm** _
 r: **10mm** _



a: **125mm** _
 b: **100mm** _
 c: **18mm** _
 d: **25mm** _
 e: **14.8mm** _
 f: **6mm** _
 r: **10mm** _



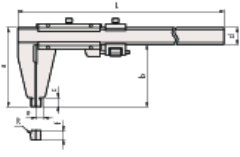
Description

A Mitutoyo dual scale caliper with fine adjustment and rounded jaws. Hardened steel and easy to read satin chrome plated scales.

specifications

With locking screw on top:	Yes
Graduation value:	0.001"/0.02mm
Inside measurement of:	0.504"
Limit of measurement error E MPE:	±0.002"
Limit value of the measurement deviation S MPE:	±0.002"
Scope of delivery:	Delivery in a box
Weight:	1200g _

Dimensions



a: **125mm** _
b: **100mm** _
c: **18mm** _
d: **25mm** _
e: **14.8mm** _
f: **6mm** _
r: **10mm** _