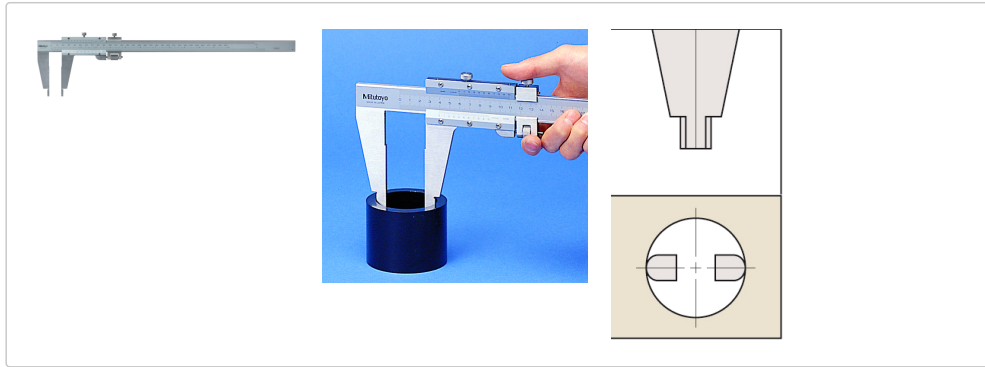




Vernier calipers, general shape

Article number: 160-125



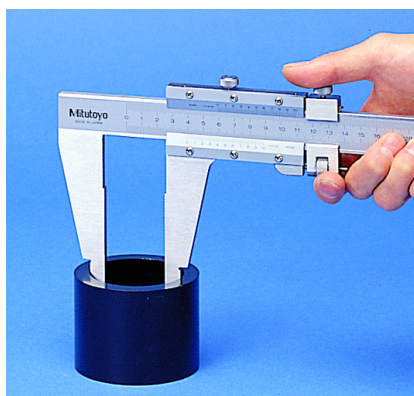
Pictures



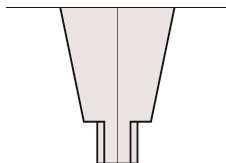
a: **95mm** _
 b: **25mm** _
 c: **12mm** _
 d: **20mm** _
 e: **10mm** _
 f: **3.8mm** _
 r: **5mm** _



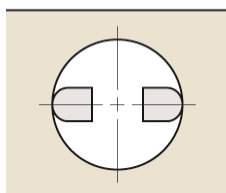
a: **95mm** _
 b: **25mm** _
 c: **12mm** _
 d: **20mm** _
 e: **10mm** _
 f: **3.8mm** _
 r: **5mm** _



a: **95mm** _
 b: **25mm** _
 c: **12mm** _
 d: **20mm** _
 e: **10mm** _
 f: **3.8mm** _
 r: **5mm** _



a: **95mm** _
 b: **25mm** _
 c: **12mm** _
 d: **20mm** _
 e: **10mm** _
 f: **3.8mm** _
 r: **5mm** _



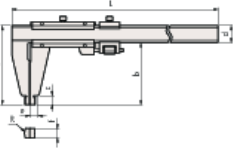
Description

A Mitutoyo dual scale caliper with fine adjustment and rounded jaws. Hardened steel and easy to read satin chrome plated scales.

specifications

With locking screw on top:	Yes
Graduation value:	0.001"/0.02mm
Inside measurement of:	0.304"
Limit of measurement error E MPE:	±0.0015"
Limit value of the measurement deviation S MPE:	±0.0015"
Scope of delivery:	Delivery in a box
Weight:	450g _

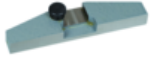
Dimensions



a: 95mm _
b: 25mm _
c: 12mm _
d: 20mm _
e: 10mm _
f: 3.8mm _
r: 5mm _

Accessories

Recommended product:



Depth measuring bridge for vernier calipers
125 mm width for 300 mm measuring range
050085-10
RRP: € 72.00 *