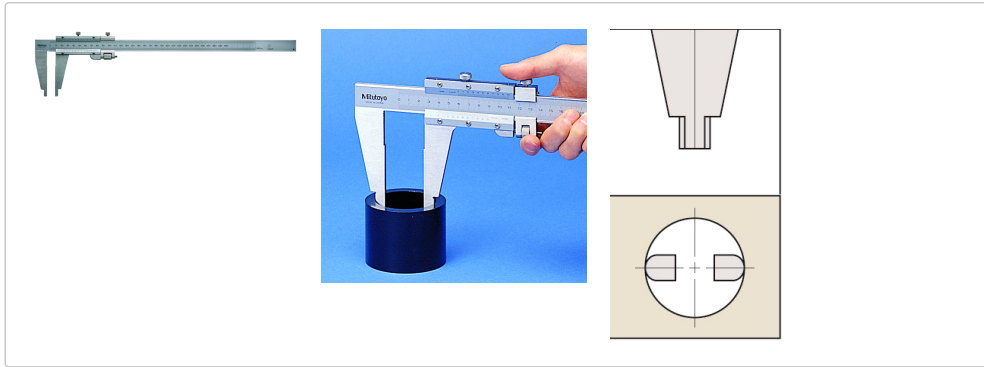




Vernier calipers, general shape

Article number: 160-128



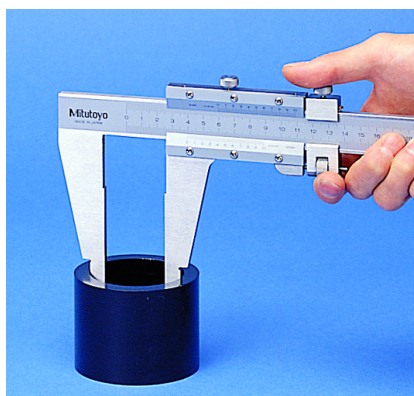
Pictures



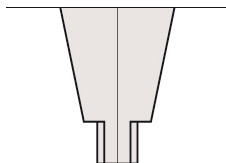
a: **125mm** _
 b: **100mm** _
 c: **18mm** _
 d: **25mm** _
 e: **14.8mm** _
 f: **6mm** _
 r: **10mm** _



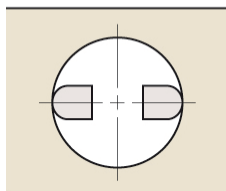
a: **125mm** _
 b: **100mm** _
 c: **18mm** _
 d: **25mm** _
 e: **14.8mm** _
 f: **6mm** _
 r: **10mm** _



a: **125mm** _
 b: **100mm** _
 c: **18mm** _
 d: **25mm** _
 e: **14.8mm** _
 f: **6mm** _
 r: **10mm** _



a: **125mm** _
 b: **100mm** _
 c: **18mm** _
 d: **25mm** _
 e: **14.8mm** _
 f: **6mm** _
 r: **10mm** _

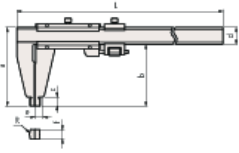


Description

- With offset on top for direct reading of internal measurements without adding the thickness of the measuring jaws.
- Scale and matt chrome finish.
- Hardened stainless steel rail and slide.
- Raised guideways.

specifications

With locking screw on top:	Yes
Graduation value:	0.02mm
Inside measurement of:	20.1mm
Limit of measurement error E MPE:	±0.05mm
Limit value of the measurement deviation S MPE:	±0.05mm
Scope of delivery:	Delivery in a box
Weight:	1200g _

Dimensions

a: **125mm** _
b: **100mm** _
c: **18mm** _
d: **25mm** _
e: **14.8mm** _
f: **6mm** _
r: **10mm** _