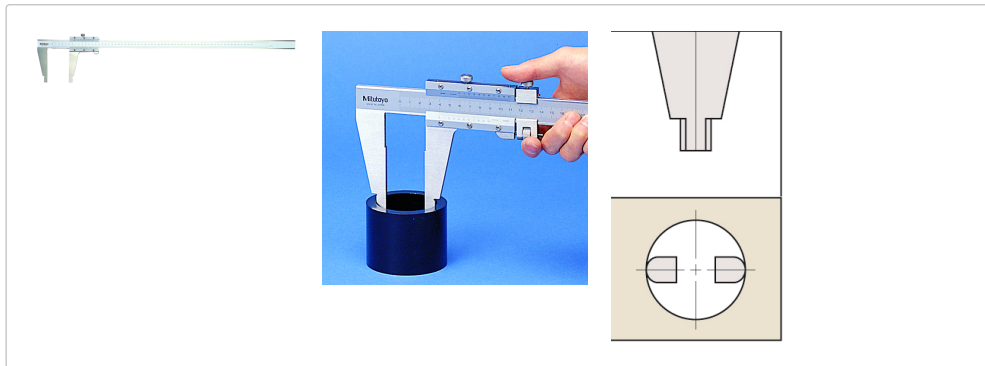




## Vernier calipers, general shape

Article number: 160-133



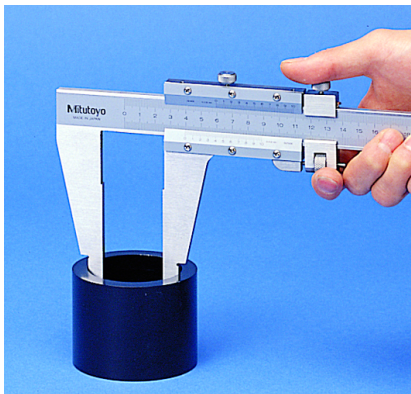
### Pictures



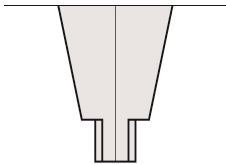
a: **212mm** \_  
 b: **180mm** \_  
 c: **30mm** \_  
 d: **32mm** \_  
 e: **19mm** \_  
 f: **8mm** \_  
 r: **10mm** \_



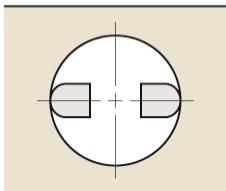
a: **212mm** \_  
 b: **180mm** \_  
 c: **30mm** \_  
 d: **32mm** \_  
 e: **19mm** \_  
 f: **8mm** \_  
 r: **10mm** \_



a: **212mm** \_  
 b: **180mm** \_  
 c: **30mm** \_  
 d: **32mm** \_  
 e: **19mm** \_  
 f: **8mm** \_  
 r: **10mm** \_



a: **212mm** \_  
 b: **180mm** \_  
 c: **30mm** \_  
 d: **32mm** \_  
 e: **19mm** \_  
 f: **8mm** \_  
 r: **10mm** \_



## Description

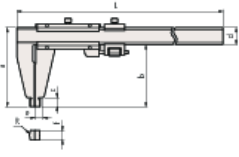
This caliper in general form is available with or without a fine adjustment device and offers you the following advantages:

- On the metric-only models, the upper offset vernier scale allows you to read the internal dimensions directly without having to add the width of the measuring jaws
- The satin chrome surface of the main and vernier scale ensures good legibility

## specifications

With locking screw on top:	<b>Yes</b>
Graduation value:	<b>0.05mm</b>
Inside measurement of:	<b>20.1mm</b>
Limit of measurement error E MPE:	<b>±0.22mm</b>
Limit value of the measurement error S MPE:	<b>±0.22mm</b>
Scope of delivery:	<b>Delivery in a box</b>
Weight:	<b>4700g</b> _

## Dimensions



a: **212mm** \_  
b: **180mm** \_  
c: **30mm** \_  
d: **32mm** \_  
e: **19mm** \_  
f: **8mm** \_  
r: **10mm** \_