

Features

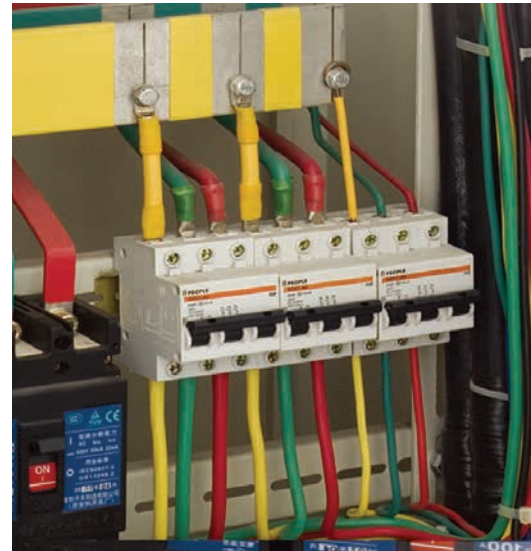
- Analog Circuit Breaker Finder
- Voltage Range 120/240V
- For Use On Energized Lines
- LED Display
- Visual/Audible indicaton
- Function identifies Specific Circuit Breakers or Fuses With A Flashing LED Light and audible tone
- Plug-in transmitter allows one person test
- Identify And Troubleshoot Energized Outlets Or in candescent light fixture
- Includes Transmitter, Receiver, Battery, and Instructions.



Model CT-230A
Receiver



Model CT-230B
Transmitter



CT-240 Digital Circuit Breaker Finder

Features

- Digital Circuit Breaker Finder
- Voltage Range 120/240V
- For Use on Energized Lines
- LED Display
- Visual/Audible indicaton
- Function identifies Specific Circuit Breakers or Fuses With A Flashing LED Light and audible tone
- Identify and Troubleshoot Energized Outlets or in candescent light fixture
- Includes Transmitter, Receiver, Battery, and Instructions.

Size(HxWxD): 192mm x 64mm x 42mm
Weight: 120g
Accessories:
9V batteries and clamshell



Model CT-240B
Transmitter



Model CT-240A
Receiver

Features

- Insulated inductive probe tip prevents shorting conductors
- Tests include wire trace, continuity test, clear/busy/ringing line test and tip/ring identification
- Alligator clips for non-terminated cables and modular connectors for direct connections to telephone and internet wiring
- Selectable continuous or variable tone generation
- Built-in speaker on probe with sensitivity control

Specifications

Function	Max Range	Basic Accuracy
Voltage DC	600V	±0.5%
Voltage AC	600V	±1.2%
Current DC	200mA	±1.5%
Current AC	200mA	±2.0%
Resistance	20MΩ	±0.8%
Continuity Test	Beep if less than 100Ω	

Complete with Amplifier probe and Tone Generator with alligator clips and modular RJ11 phone and RJ45 digital connector cables, 9V battery and case
Tone Generator and Amplifier Probe Kit
Heavy duty kit with audible tone easily identifies wires or cables

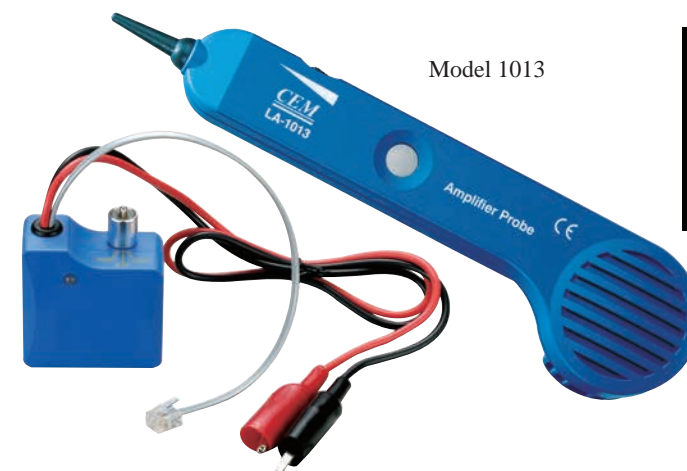
Size(HxWxD): 162mm x 74.5mm x 44mm
Weight: 308g
Accessories:
Test leads, 9V batteries and gift box.



Model 1014



LA-1013 Amplifier Probe



Model 1013

Features

- Insulated inductive probe tip prevents shorting conductors
- Tests include wire trace, continuity test, clear/busy/ringing line test and tip/ring identification
- Alligator clips for non-terminated cables and modular connectors for direct connections to telephone and internet wiring
- Selectable continuous or variable tone generation
- Built-in speaker on probe with sensitivity control



Size(HxWxD): 231mm x 56mm x 27mm
Weight: 270g
Accessories:
9V battery and clamshell