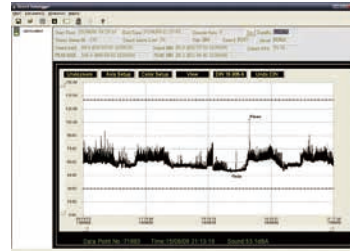


Features

- IEC61672-1 CLASS2
- MAX & MIN measurements
- Alarm value setup
- A & C Weighting
- NORM(Normal) & PEAK mode
- 25ms sample interval
- FAST & SLOW response
- Manual and Automatic mode



CE
EMC
EN: 61326



Model 173

Size(HxWxD): 106mm x 56mm x 33.5mm
Weight: 34g
Accessories :
3.6V Lithium battery, stand, software and clamshell.

Specifications

Standard applied	IEC61672 -1 CLASS2
Accuracy	±1.4dB
Frequency range	31.5HZ ~ 8kHz
Dynamic range	50dB
Level range	Auto: 30dB~130dB
Frequency weighting	A/C
Time weighting	FAST (125ms), SLOW (1s)
Memory Reading	129920 points for dBA or dBC
Sample rate	1 Sec. to 24h
Microphone	1/2 inch electret condenser microphone
Data output	USB data traffic

DT-186/187 Anemometer Datalogger



Model 186

Model 187

CE
EMC
EN: 61326



Features

- Alarm setup and indication
- Recording and low battery indication
- Manual and automatic start mode
- USB port for data traffic and power supply
- Status indication via Red/Yellow LED and Green LED
- Analysis software windows 98/2000/XP/Vista/7

Specifications

Memory	32000 readings
Measuring rate	2sec. to 24h
Measurement Range	0.40 to 30.0m/s
Measurement Resolution	0.1m/s
Accuracy	±3.5% ± 0.2m/s
Warm up period	Less than 2 seconds

Size(HxWxD): 145mm x 35mm x 30mm **Weight:** 49g
Accessories : 3.6V Lithium battery, software and clamshell.



Model 185

CE
EMC
EN: 61326

DT-185 USB Light Datalogger

Features

- Alarm setup and indication
- Recording and low battery indication
- Manual and automatic start mode
- USB port for data transmission and power supply
- Status indication via Red/Yellow LED and Green LED
- Analysis software windows XP/Vista/Win7/8/10

Specifications

Memory	51840 readings
Measuring rate	1sec. to 1h
Measurement Range	0 to 1999W/m ²
Measurement Max. Resolution	1W/m ²
Accuracy	±5% or ±10W/m ²

Size(HxWxD): 145mm x 35mm x 30mm **Weight:** 49g **Accessories :** 3.6V Lithium battery, software and clamshell.



Model 174B

CE
EMC
EN: 61326



Features

- Alarm setup and indication
- Recording and low battery indication
- Manual and automatic start mode
- USB port for data traffic and power supply
- Status indication via Red/Yellow LED and Green LED

Specifications

Data Memory	10000
Sampling rate	1 min to 18 hours
Data output	USB
Temperature	
Range	-40~70°C/-40~158°F
Resolution	0.1°C/0.1°F
Accuracy	40 to 70°C/104 to 158°F ±2°C/3.6°F 0 to 40°C/32 to 104°F ±1°C/1.8°F -40 to 0°C/-40 to 32°F ±2°C/3.6°F
Humidity	
Range	0~100%RH
Resolution	0.1%RH
Accuracy	0 to 20 and 80 to 100% ±5% 20 to 40 and 60 to 80% ±3.5% 40 to 60% ±3.5%
Air Pressure	
Range	950~1050hPa
Resolution	0.1hPa
Accuracy	±0.25%FSO(25 °C)
Repeatability	±0.2% (Max ±0.3%FSO)
Linearity/Hysteresis	±0.24% FSO
Temperature coefficient	±0.1%FSO

Size(HxWxD): 145mm x 35mm x 30mm **Weight:** 49g
Accessories : 3.6V Lithium battery, software and clamshell.

DT-179 Carbon Monoxide Datalogger

Features

- Alarm setup and indication
- Recording and low battery indication
- Manual and automatic start mode
- USB port for data traffic and power supply
- Status indication via Red/Yellow LED and Green LED
- Analysis software windows 98/2000/XP/Vista/7

Specifications

Memory	32000 readings
Measuring rate	2sec. to 24h
Measurement Range	0 to 1000PPM
Measurement Resolution	1PPM
Accuracy	±5% or ±10PPM
Warm up period	Less than 2 seconds
Sensor type	Stabilized electrochemical Gas-specific (CO)
Typical sensor life	3 years

Size(HxWxD): 145mm x 35mm x 30mm **Weight:** 49g
Accessories : 3.6V Lithium battery, software and clamshell.

Model 179



CE
EMC
EN: 61326